



Critical Design Review

...

Team Bumblebee
Fall 2019
ENGR 396





Presentation Overview

- Team Progress
- Problems
- Gantt Chart
- What Needs to be Finished
- Questions



Our Purpose

- Debug PCB from last semester
- Populate new boards
- Range Testing in Holmes Hall

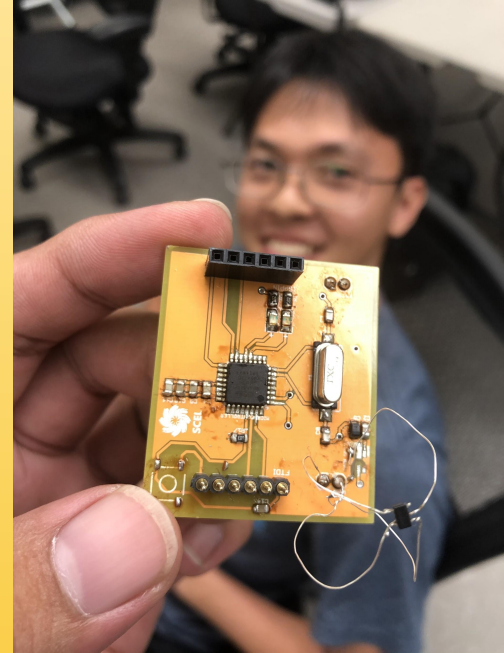
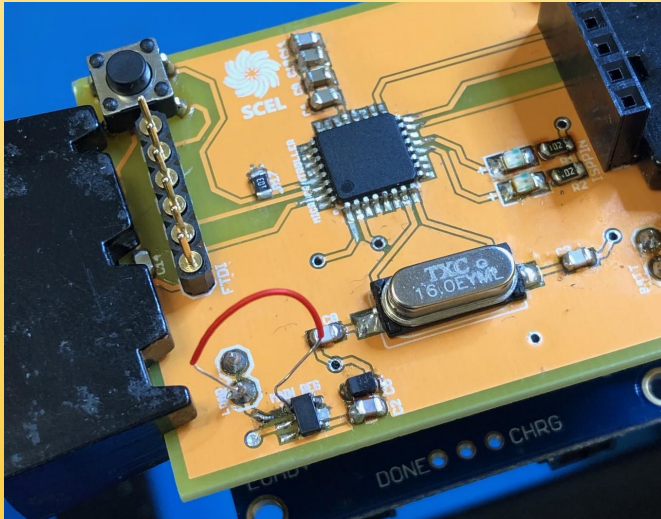




Team Progress

- Debugging PCB
- Rebuilding bare Arduino board
- Populated 2 new PCBs
 - to test 2 different boost converters
- XCTU tutorials
- Ordered new components

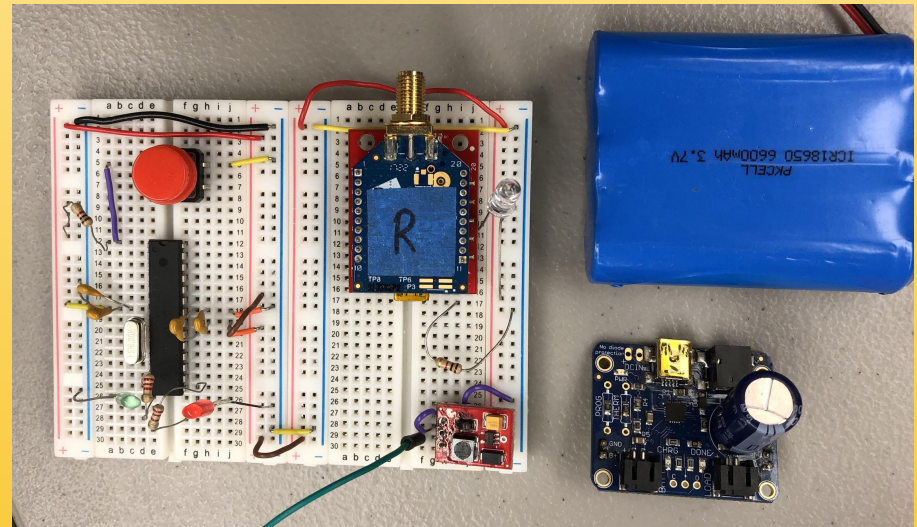
Debugging



Ft. one of our members

Bare Bumblebee Board

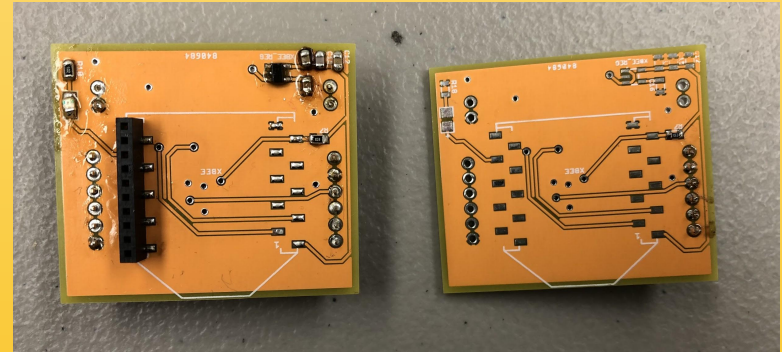
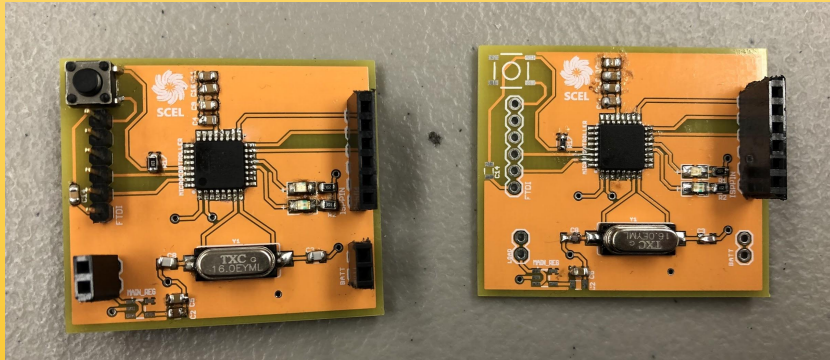
- Rebuilding bare bumblebee





Populated Boards

- Right: Arnold
- Left: Raellis
- middle : potatoes



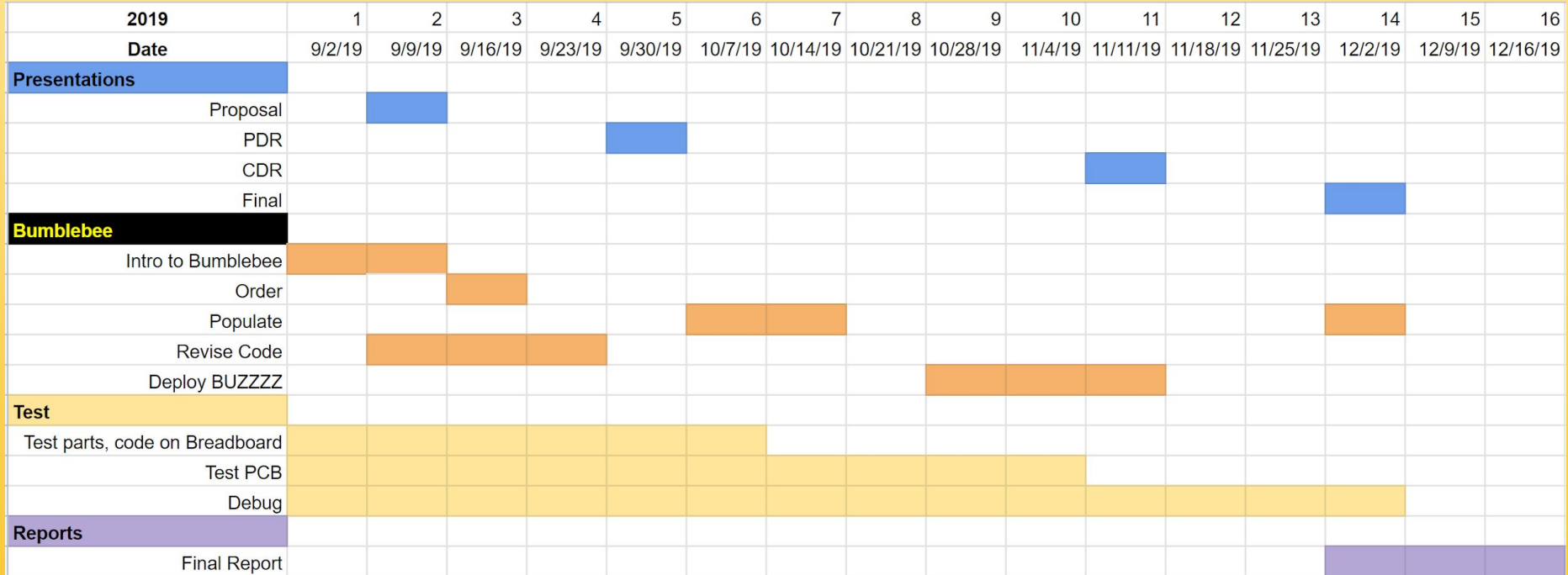


Problems

- No mentor: self-directed learning
- Ran out of XBee SMD headers
- Unsure how to send packets and do Range Testing
- “Accidentally” took apart bare Bumblebee



Gantt Chart



What Needs to be Finished

- Completely populate boards when parts come in
- Test bare Bumblebee
- Range Testing
- Learn how to send Xbee packets



Questions?