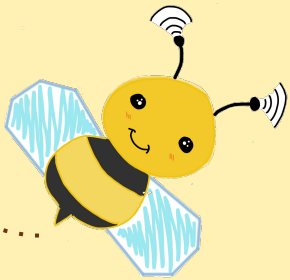


Critical Design Review

Team Bumblebee
Fall 2020



Members



Arnold Flores
EE496, EE-EP



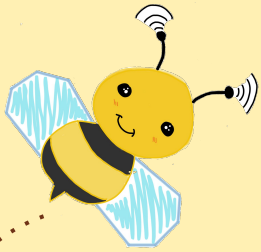
Francis Sonoda
EE396, EE- EP



Raellis Young
EE496, EE- Systems



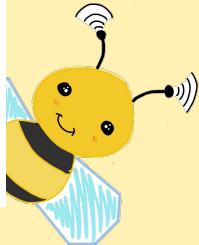
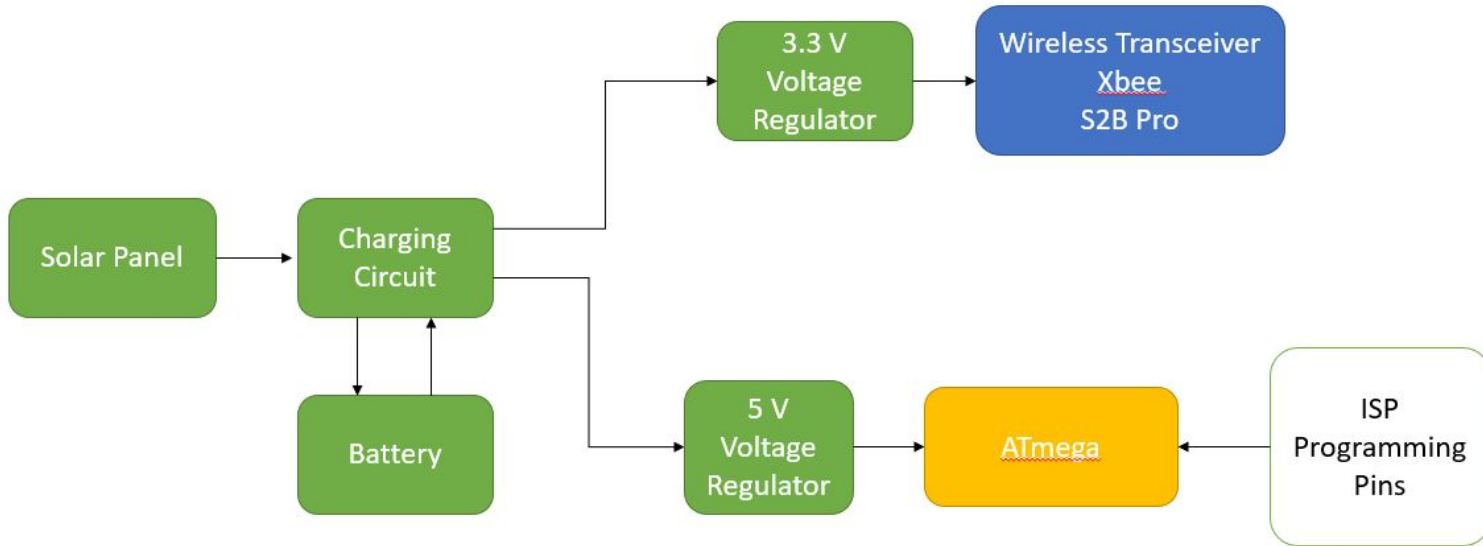
Lauryn Corpuz
EE396, EE-EP



Presentation Overview

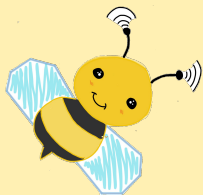
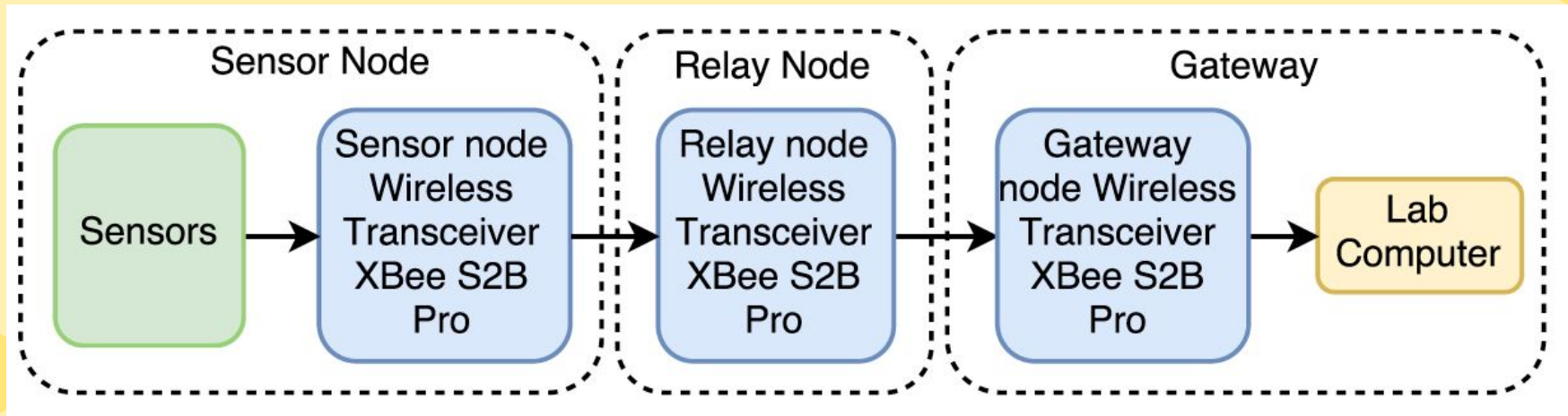
- Block Diagrams
 - Power
 - Signal/Communication
- Team Progress
- Problems
- Gantt Chart
- Upcoming Tasks
- Questions

Block Diagram- Power





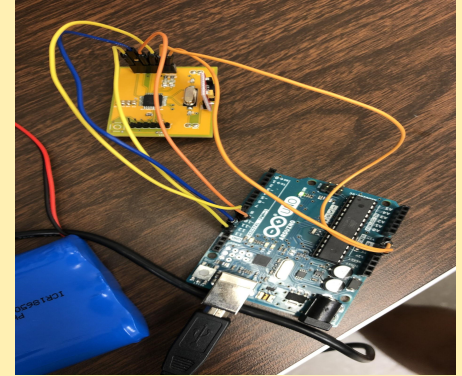
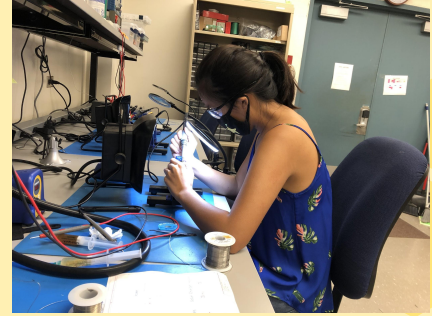
Block Diagram- Signal/ Communication



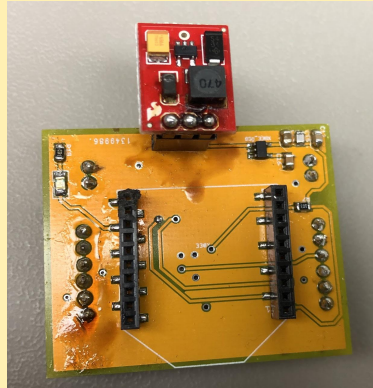
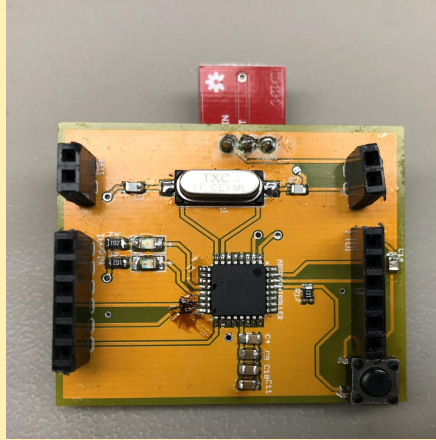


Team Progress

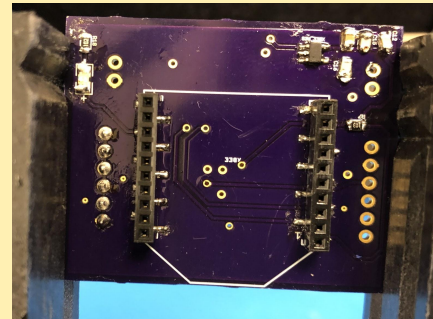
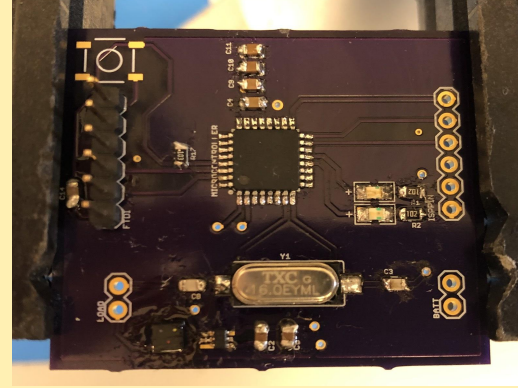
- Almost done populating with v4.0
- Finished populating v4.1
- Debugging boards
- Meeting with team Guava

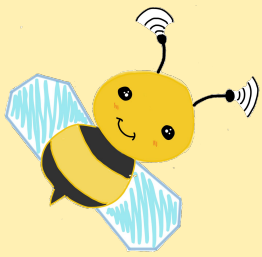


Version 4.0

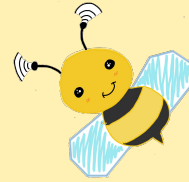


Version 4.1

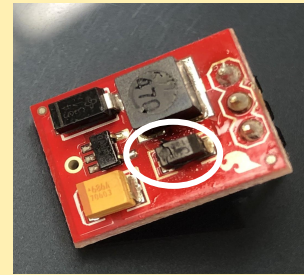


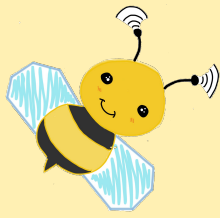


Problems



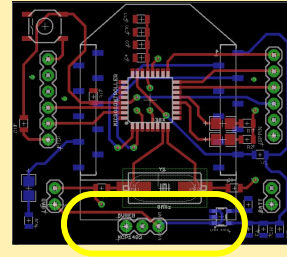
- Soldered Female headers instead of male headers
 - Had to desolder
- Ver. 4.0 was not powering
 - Call Sharmaine for help to bootload
- Debug ver. 4.0
 - Some components weren't soldered correctly
- Ver. 4.0 kept shorting and voltage regulator started smoking
 - Broke about 4 voltage regulators
- Couldn't upload code on to working v 4.0



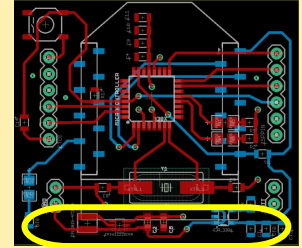


Upcoming Tasks

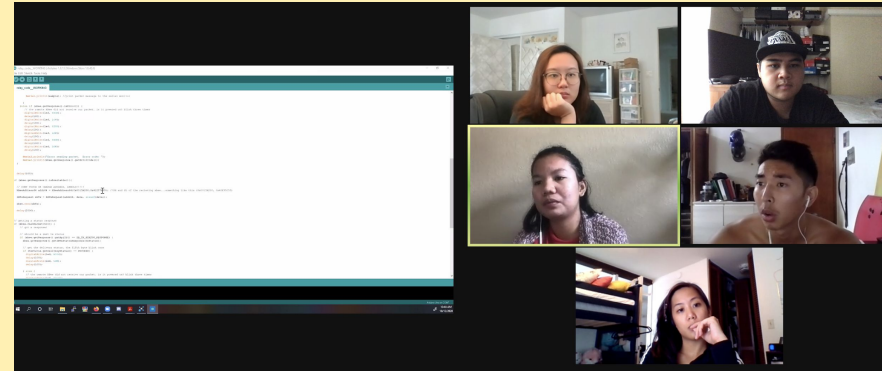
- Range Testing
- Compile Range Testing Results
- Continue debugging v4.0
 - Bootload, upload code
 - Resolder the charging chip pin header
- Test/ Debug version v4.1
 - Bootload, upload code



Ver 4.0



Ver 4.1





 Questions? 