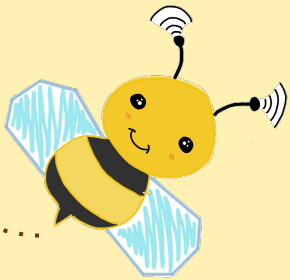



# Preliminary Design Review

Team Bumblebee  
Spring 2021





# Members

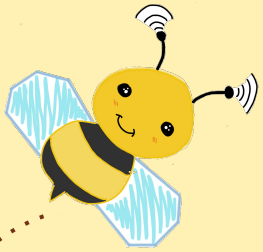
**Brian Griswold**  
EE396, EE- EP

**Francis Sonoda**  
EE496, EE- EP

**Thant Thiri**  
EE396, EE- EP

**Lauryn Corpuz**  
EE496, EE-EP

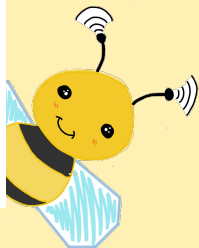
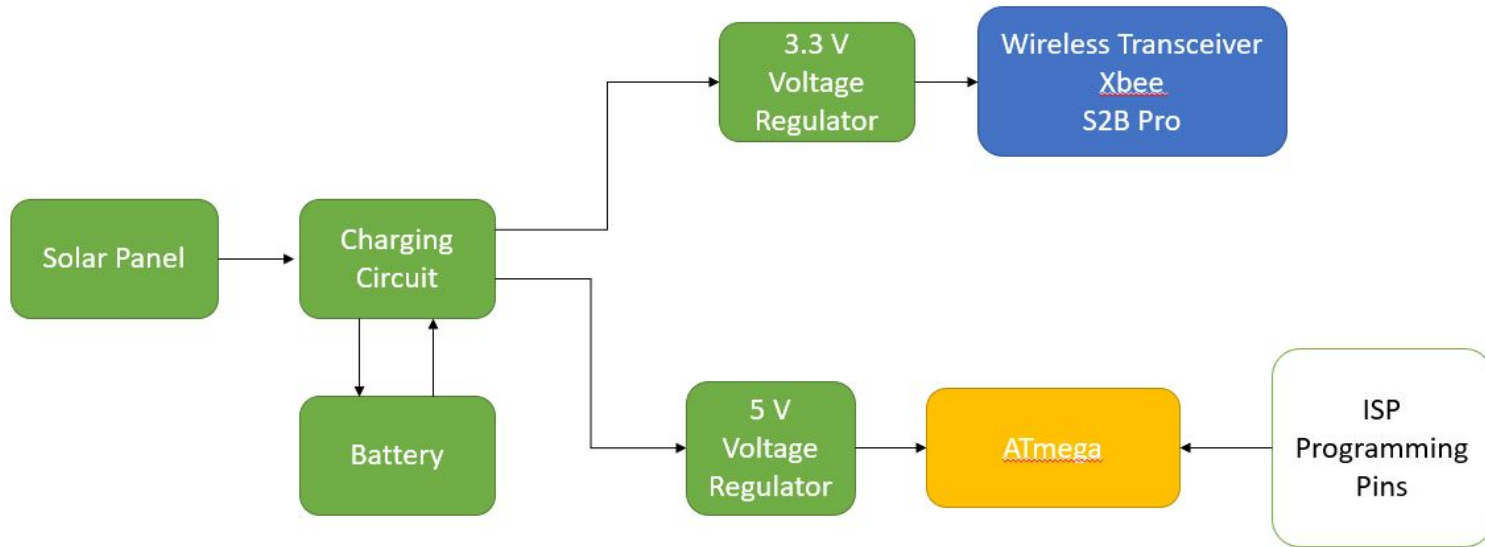
**Yin Aye**  
EE396, EE-EP



# Presentation Overview

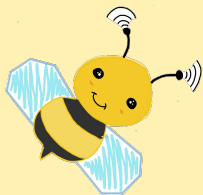
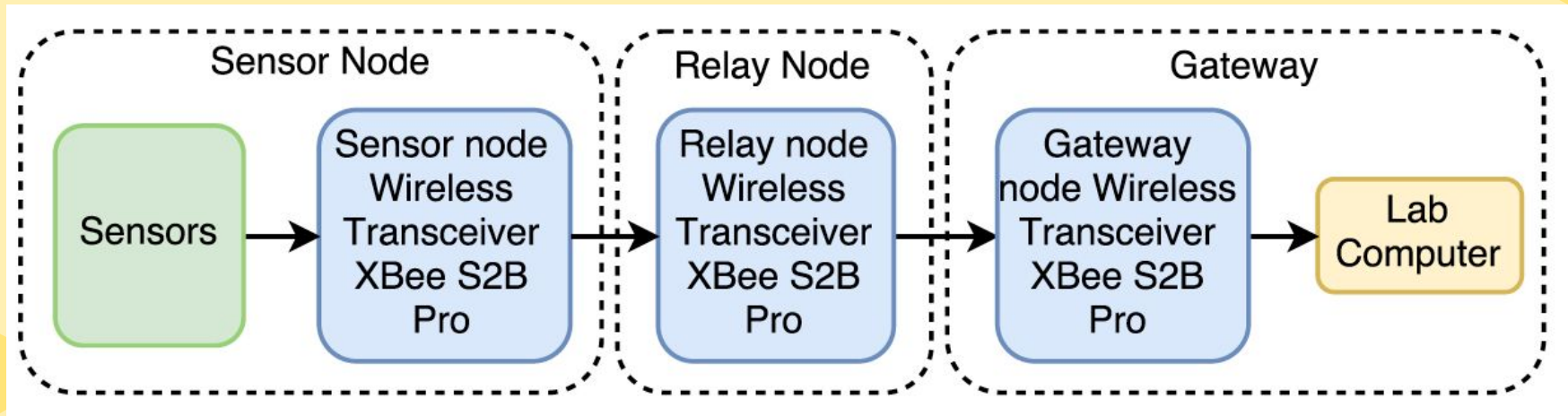
- Block Diagrams
  - Power
  - Signal/Communication
- Team Progress
- Problems
- Gantt Chart
- Upcoming Tasks
- Questions

# Block Diagram- Power



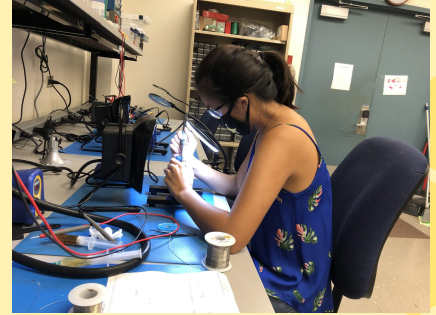


# Block Diagram- Signal/ Communication

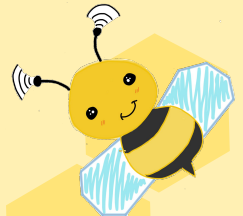
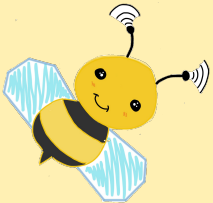




# Team Progress



- Got new members up to speed with Bumblebee PCB
- Learned how to solder
- Started populating v4.0 and v4.1 board
- Reviewed Arduino code for XBees
- Reviewed XCTU for XBees to detect each other
- Range Tested





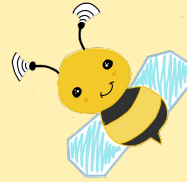
# McCarthy Mall - Tree Testing

Distance (ft)	THROUGH WALLS MCCARTHY MALL										
<b>90</b>											
Trial 1	-52		-50		15	15	0	0	100	sunny	1/31
Trial 2	-64		-56		15	15	0	0	100	sunny	1/31
Trial 3	-56		-56		15	15	0	0	100	sunny	1/31
<b>175</b>											
Trial 1	-66		-66		15	15	0	0	100	sunny	1/31
Trial 2	-63		-64		15	15	0	0	100	sunny	1/31
Trial 3	-64		-68		15	15	0	0	100	sunny	1/31
<b>244</b>											
Trial 1	-61		-63		15	15	0	0	100	sunny	1/31
Trial 2	-63		-64		15	15	0	0	100	sunny	1/31
Trial 3	-65		-67		15	15	0	0	100	sunny	1/31
<b>324</b>											
Trial 1	-73		-75		15	15	0	0	100	sunny	1/31
Trial 2	-74		-74		15	15	0	0	100	sunny	1/31
Trial 3	-73		-75		15	15	0	0	100	sunny	1/31
<b>403</b>											
Trial 1	-80		-81		15	15	0	0	100	sunny	1/31
Trial 2	-73		-74		15	15	0	0	100	sunny	1/31
Trial 3	-74		-74		15	15	0	0	100	sunny	1/31
<b>477</b>											
Trial 1	-84		-84		15	15	0	0	100	sunny	1/31
Trial 2	-81		-83		15	15	0	0	100	sunny	1/31
Trial 3	-86		-86		15	15	0	0	100	sunny	1/31

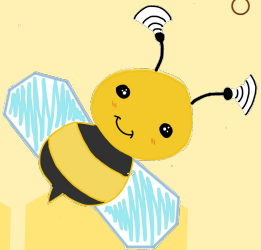


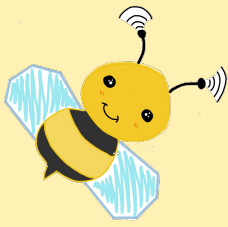


# Problems



- Updating new members
  - Soldering help
  - Did bare arduino tutorial
- Trouble with boot loading to v4.0 & v.4.1
  - Read old documentation & articles online
  - Asked other members for help
- Uploading code using the FTDI
  - Yin and Thiri were able to figure out solution while working on Bare Bumblebee





# Upcoming Tasks



- Continue to boot load

- Meet with Dr. Kuh in two weeks

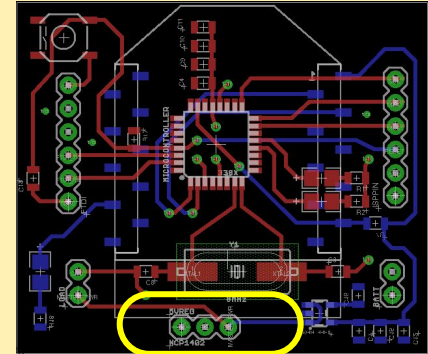
- Conduct more complex Range Testing

- Through walls

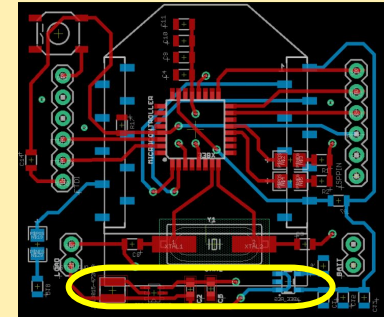
- Range test on different floors of Holmes Hall

- Update wiki with past presentation

- Document troubleshooting process to make it easier for future members



Ver 4.0: 5V Step Up Breakout board



Ver 4.1: 5V regulator SMD (TPS61222DCKR)





Questions?