



SCEL

Team Bumblebee

PROPOSAL PRESENTATION

Fall 2018

Advisor : Dr. Anthony Kuh



Team Bumblebee Introductions

Mizpah Mansanao

- Senior-396
- Electrical
Engineering
- Electro
Physics

Sharmaine Javier

- Junior - 396
- Electrical
Engineering
- Electro
Physics

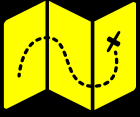
Xiao Chen

- Junior - 396
- Electrical
Engineering
- Electro
Physics



SCEL





Presentation Overview

- Motivation/Approach
- Project Goals
- Gantt Chart
- Predicted Problems
- Team Progress
- Design



SCEL





Motivation/ Approach

The Bumblebee Weatherbox is the second generation communications module designed to relay meteorological data collected by the other weatherboxes. Its purpose is to increase the effective range of the weatherboxes.



SCEL





SCEL



Project Goals

Fall 2018

- Redesign PCB to include ISP programming pins and reset capacitor for FTDI
- Deploy 2 Bumblebees
- Fabricate new housing design



Gantt Chart



SCEL

Week	1	2	3	4	5	6	7	8	9	10	11	12	13	14	15	16
	Aug-28	Sep-4	Sep-11	Sep-18	Sep-25	Oct-2	Oct-9	Oct-16	Oct-23	Oct-30	Nov-6	Nov-13	Nov-20	Nov-27	Dec-4	Dec-11
Presentations																
Proposal Presentation		Sep-8														
Preliminary Design Review					Sep-29											
Critical Design Review											Nov 10					
Final Presentation														Dec-1		
PCB Fabrication/Assembly																
Bare Board		Start	End													
Fabrication Time			Start	End												
Populating							Start	End								
Testing									Start	End						
Firmware								Start	End							
Housing																
Fabrication											Start	End				
Deployment													Start	End		
Final Report															Start	End



SCEL



Predicted Problems

- Learning Curve
- Time Management
- Debugging
- Populating board





SCEL



Learning Expectations

- Get a good understanding of connecting Xbees in a network
- Become proficient with EAGLE and other softwares
- Work well as a group





SCEL



Team Progress

- Gathered old files from previous team.
- Started working on a bare arduino.





SCEL

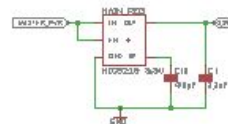
Switches



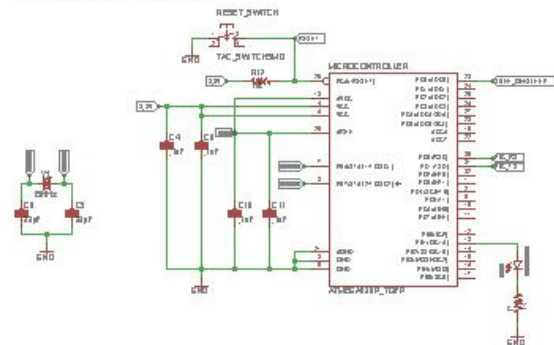
Programming Circuit



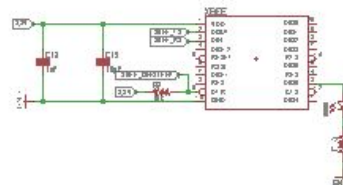
Voltage Reg



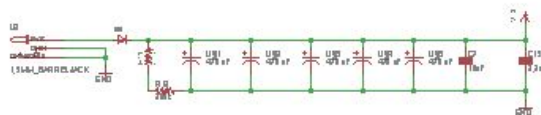
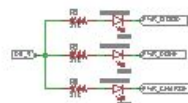
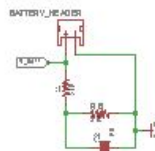
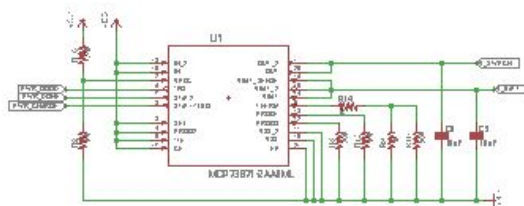
Microcontroller



Xbee



Solar Charging Circuit

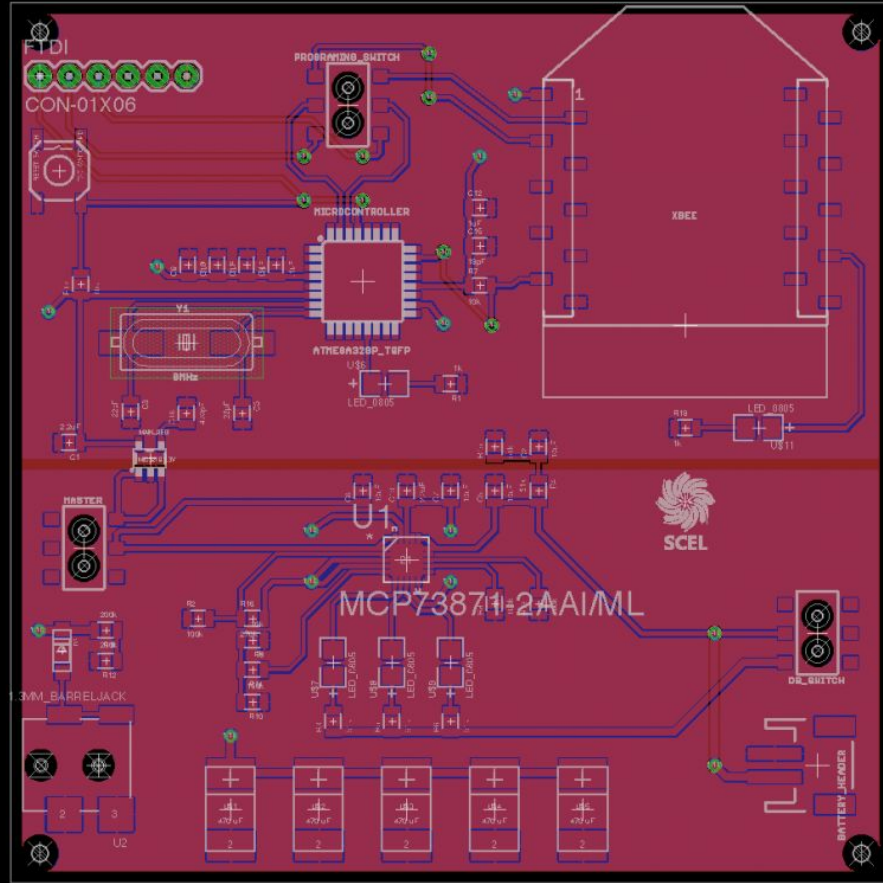


Title: BumbLabee5
Version:
SV: 1/18 8:07 AM
Drawn By: 1/1





SCEL





QUESTIONS?