



Team Guava

Proposal

Presentation

S18



SCEL

Smart Campus Energy Laboratory



Presentation Overview

- Introduction
- Motivation
- Guava Progress F17
- Project Goals
- Gantt Chart
- Learning Expectations
- Predicted Problems
- Questions



SCEL



Team Guava **Introductions**



Riley Cammack

Junior

3rd semester

CENG



Kenneth Lauritzen

Junior - 496

3rd semester

CENG



Sawinna Huang

Junior - 496

3rd semester

EE -Systems



SCEL Motivation

Guava is the fifth and newest weatherbox team for the Smart Campus Energy Lab. The main goal for Team Guava is to create a weatherbox with a new processor and new sensors.

With this new hardware, the new weatherbox will hopefully have better capabilities with implementing new sensors and code in the future.



SCEL



Guava Progress Spring '18

Implemented new processor (ATmega 1284)
and new sensors

- Created schematic and breadboard
- Designed PCB; now being processed for printing

BME280, GPS V3, Apogee 215

Perks of the **ATmega1284**

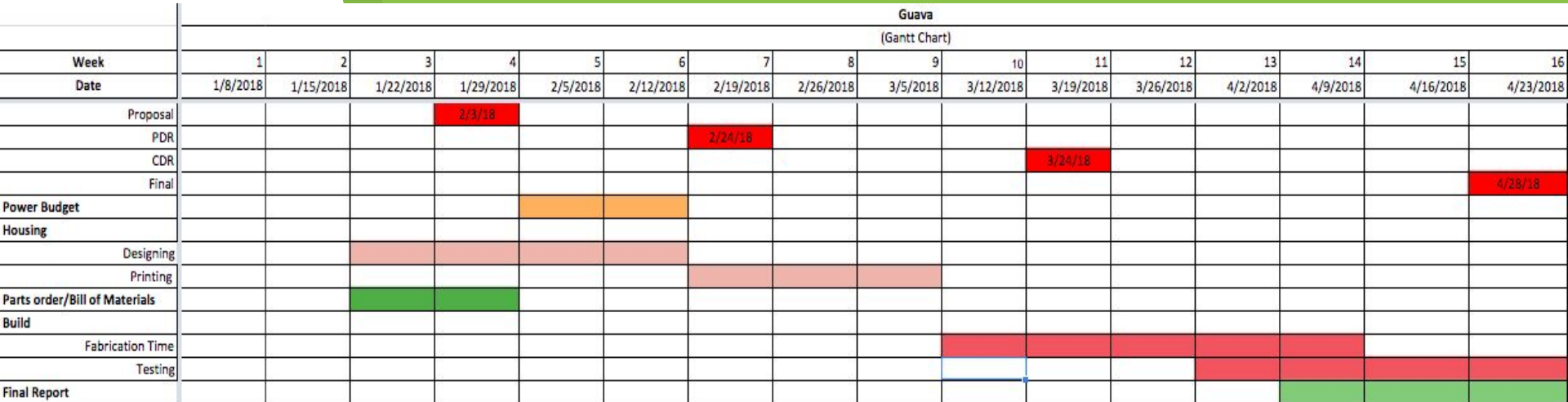
- Bigger Flash Memory; (4x) 32 kB -> 128 kB
- Increased # of I/O Pins; (+9) 23 -> 32



Project Goals

Produce a self-sustaining environmental sensor module that will collect meteorological data

- Make a theoretical power budget
- Implement changes to the software
 - Drop clock speed to 8MHz
- Populate printed circuit board
- Collect data for actual power budget
- Test and Deploy the completed weatherbox



Gantt Chart



Learning Expectations

PCB Designing and Layout

- Part Integration
 - Understand new processor and sensors, further research
- Improve PCB design skills

Fabrication

- Soldering
- Weatherproofing Housing



SCEL



Predicted **Problems**

Entering New Territory

- Theoretical/Actual Power Budget
- Populating/Troubleshooting
- Changing clock speed
- Firmware

Other

- Weatherproofing
- Possible redesign

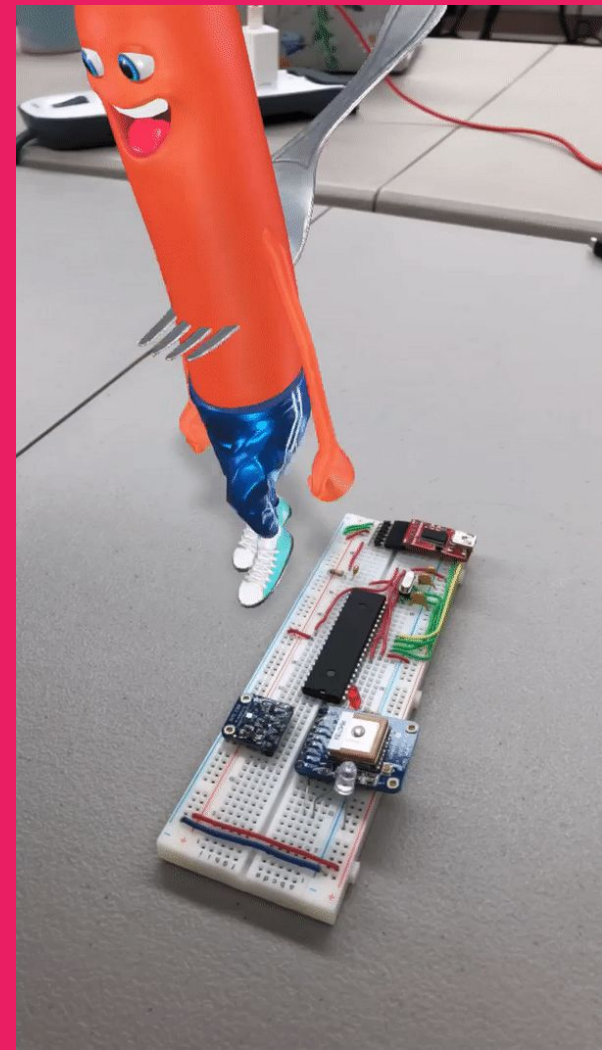


Thank you!
Any Questions?



SCEL

Smart Campus Energy Laboratory





CREDITS

We used the following free online resources:

- ▶ Presentation template by [SlidesCarnival](#)
- ▶ Photographs by [Death to the Stock Photo](#) ([license](#))