

Team STM Proposal Presentation

Mark Cacal
Josh Claudio
Andrew Obatabae



Table of Contents

- × Meet the team!!!
- × Mission Statement
- × Motivation
- × Overview of Semester
- × Gantt Chart





Hello!

I am Mark Cacal

Senior | EP

FF:



Ni Hao!

I am Drew Obataki

Senior | Computer Engineering

FF: My birthday is on 8/6 and I am 8'6"



Kumusta!

I am Josh Claudio

Lab Manager | Senior | EP

FF:



Mission Statement

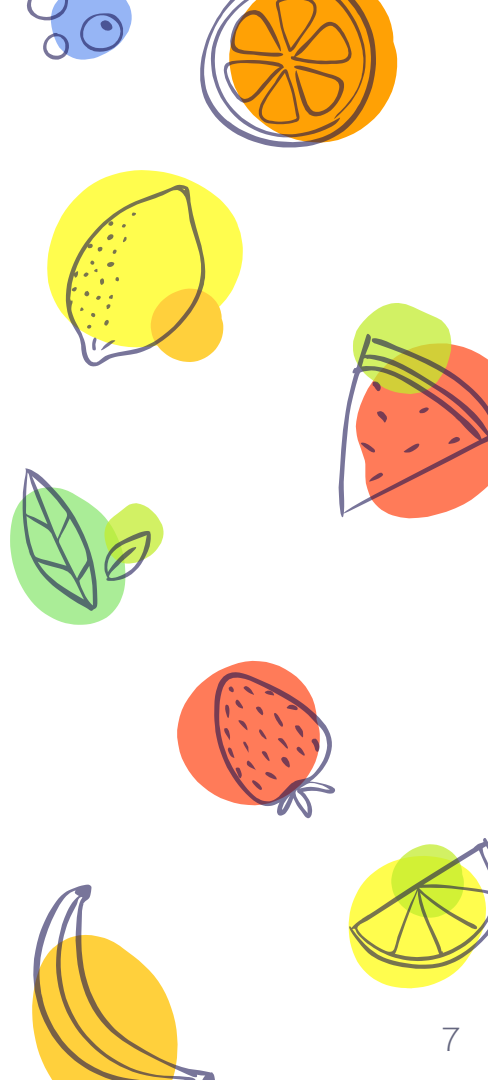
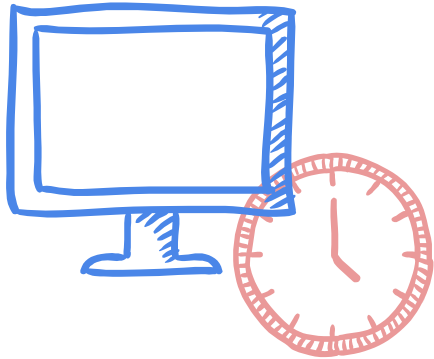
Design a small and affordable sensor module that can accurately measure climate data just as accurately as commercial Weatherhawk.





Motivation

Research and build a product on the STM32 platform that supports faster computation and concurrent computing

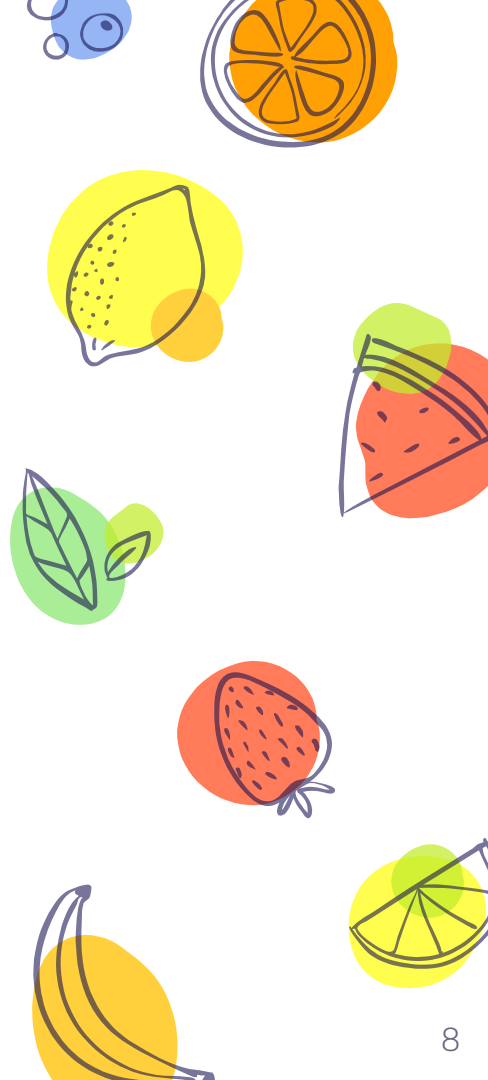
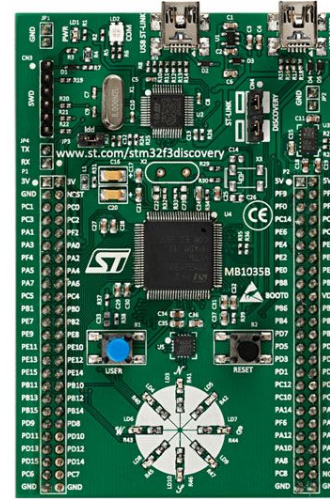




Specifics

Our Processor: STM32F3

- ✗ Based on ARM Cortex line of processors
- ✗ Runs at much higher clock speed
- ✗ First weatherbox to not use Arduino Libraries
- ✗ Use C and self built libraries





Project Goals

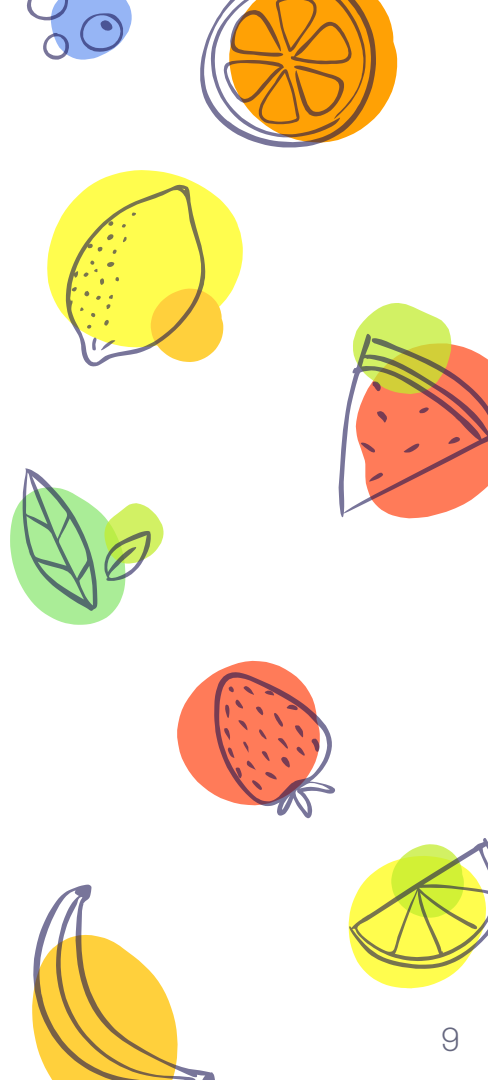
Document Process



Create Device Driver Libraries

Bare STM board

Eagle Schematic and Board Design



Gantt Chart

Mark Cacal, Josh Claudio,
Andrew Obatake

Team ANDREW

Week	1	2	3	4	5	6	7	8	9	10	11	12	13	14
Tutorials														
C														
Eclipse														
Eagle														
Presentations														
Proposal Presentation			09/08											
Preliminary Design Review						9/29/1								
Critical Review										11/10				
Final Presentation														12/01
Build														
Eagle Schematic Design														
Design PCB Layout														
Testing														
Debug														
Final Report														

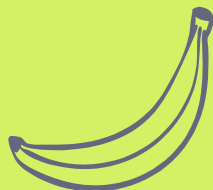
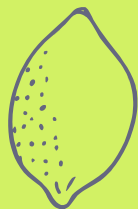
Thanks!

Any questions?

You can find me at:



Extra graphics





SlidesCarnival icons are editable shapes.

This means that you can:

- Resize them without losing quality.
- Change fill color and opacity.

Isn't that nice? :)

Examples:

